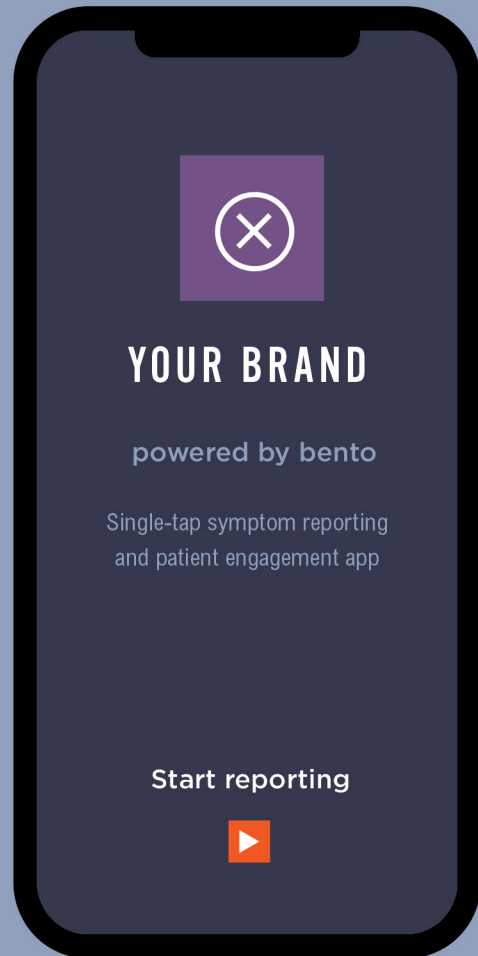
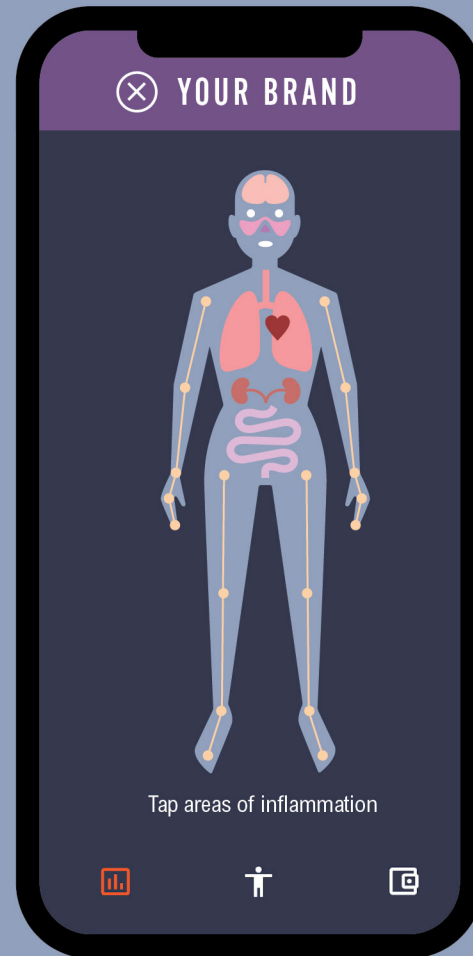


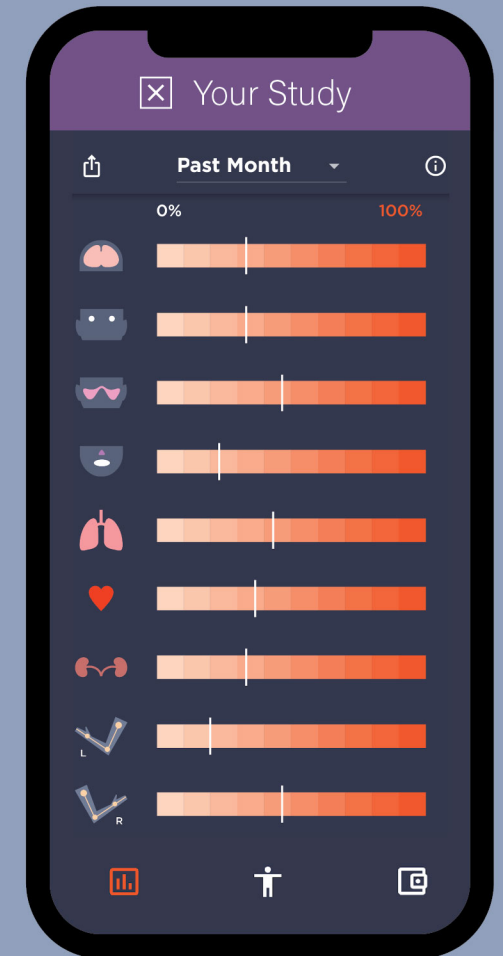
**seamless**



**targeted**



**real time**



## brand it



### 1. add logo

powered by bento

Single-touch symptom diary and health surveys  
mobile tool for patient engagement

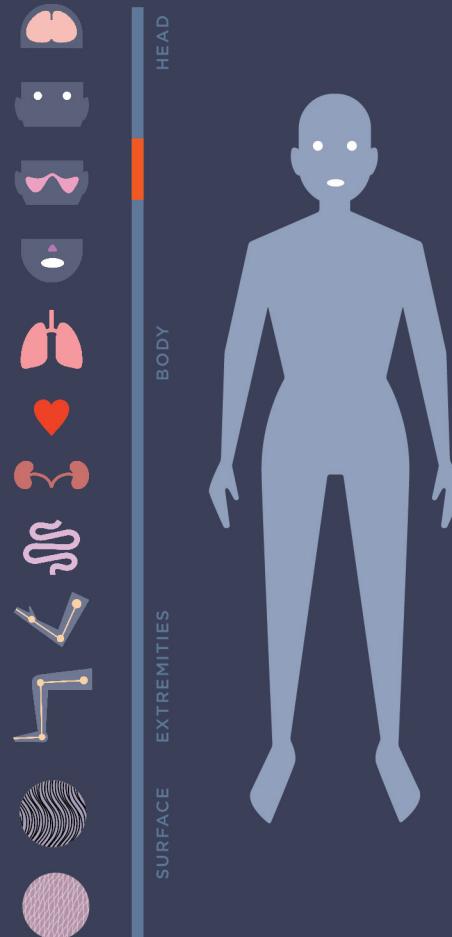
### 2. select color



### 3. build bodyshop ▶

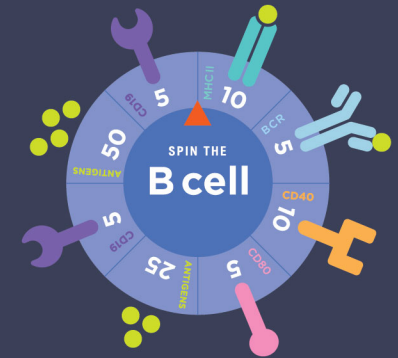
## customize it

### 3. select target areas



## sponsor it

### 4. select game



SPIN THE B-CELL  
customize ▶

### 5. add sponsor

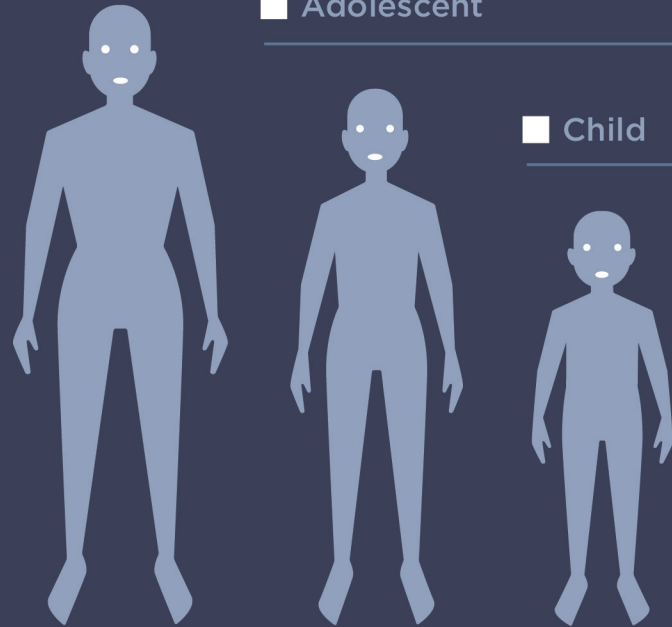


**body builder**

Adult

Adolescent

Child



Select gender neutral profile

**bio library**

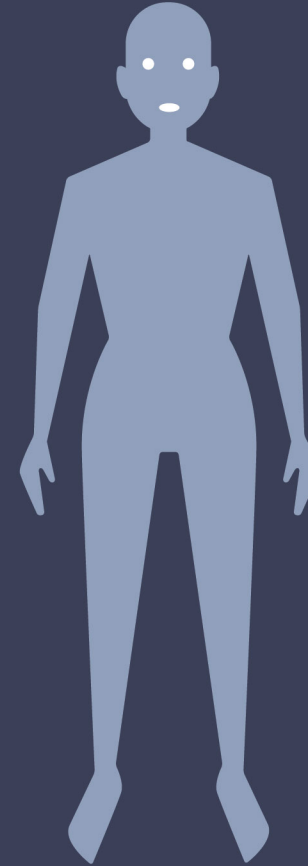


HEAD

INTERNAL

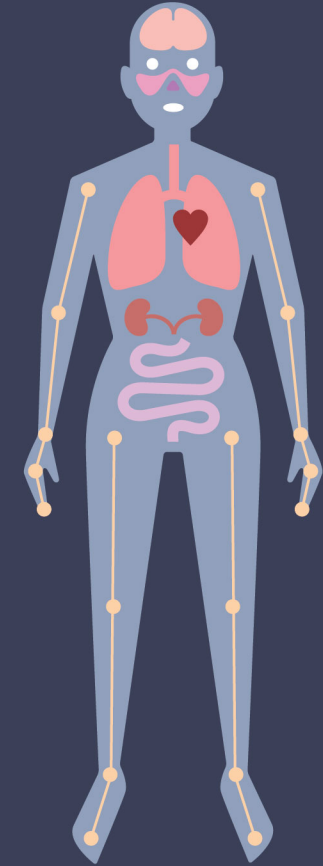
EXTREMITIES

SURFACE



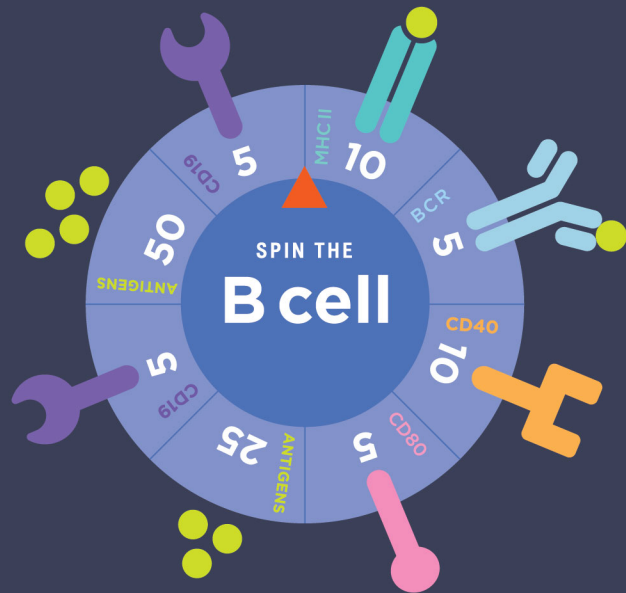
Code-free click & build

**bodyshop model**



Continue to gamification module

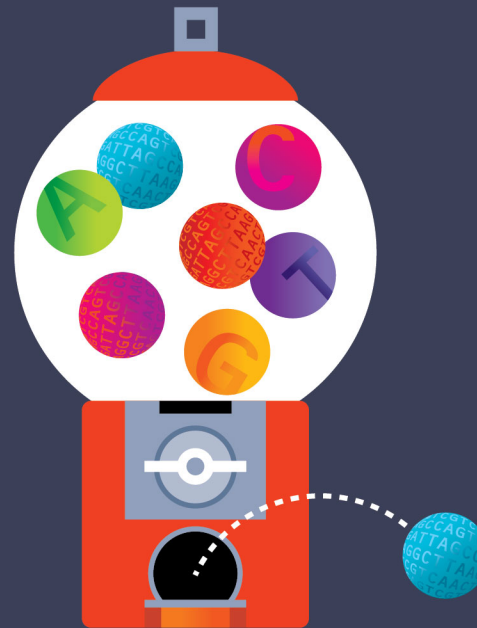
**power play: example 1**



**SPIN THE B-CELL**

- Druggable target education
- Play-to-Earn game sponsorship
- Real-time microrewards

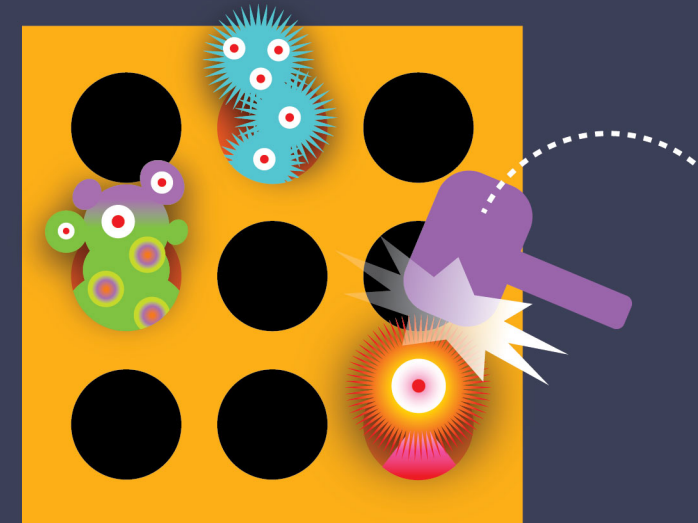
**power play: example 2**



**gumball genie**

- Genome education
- Play-to-Earn game sponsorship
- Continuous community engagement

**power play: example 3**



**WHACK-A-MOLE**

- Microbiome education
- Play-to-Earn game sponsorship
- Real-time microrewards